



David Beals

COLONIAL NATURE PHOTOGRAPHY CLUB

MONDAY, MARCH 2, 2015

AGENDA

- Introduction of new members and/or guests
- Announcements
 - Annual Dues are now overdue. See Rose to pay tonight.
 - \$10 per year due January 1st.
- Photoshop Week 2015 – Feedback/Comments

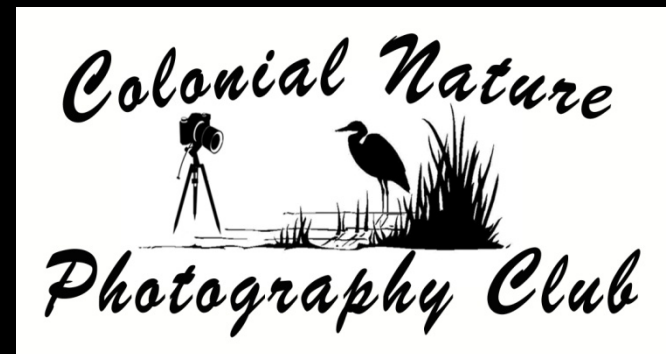
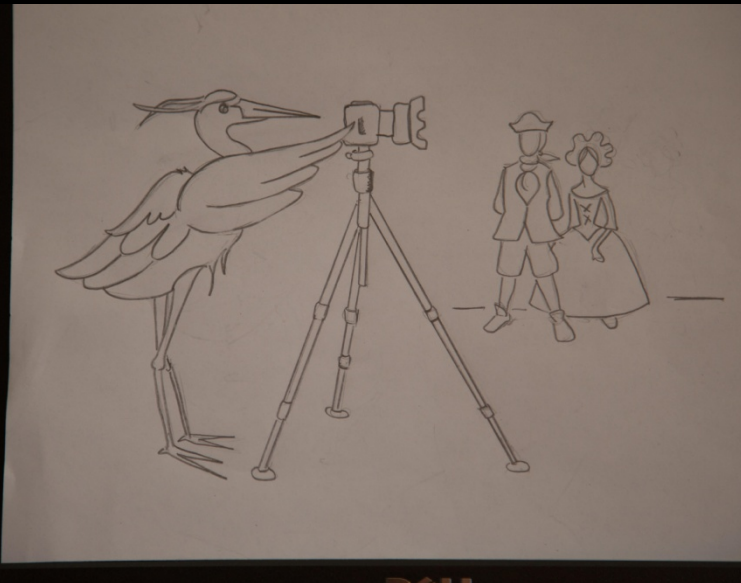
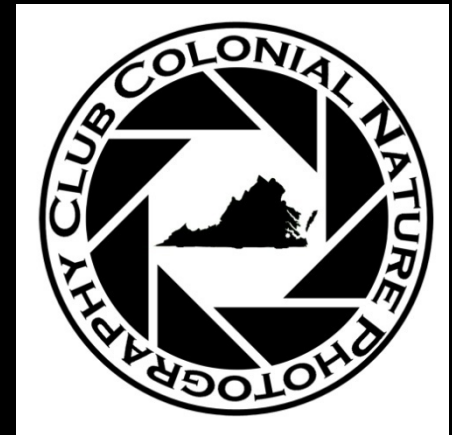
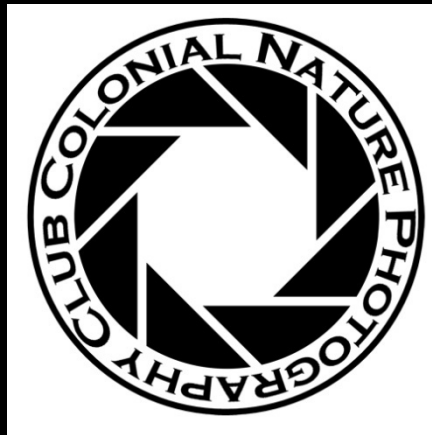
AGENDA

– Newsletter –

- Has a new name and logo!! **CNPC ViewFinder**
- Still looking for ideas / contributions
- Have items to Barbara by 15th of each month
- Contents included:
 - Grape outing recap and pictures
 - February meeting photos
 - Tips & Techniques – Wildlife shooting
- New sections added:
 - Member spotlight - Founder Ken Conger
 - Novice Notes – Rule of Thirds
 - On Location – Jamestowne Island Loop
 - Items for sale/trade
- Comments/Questions/Thoughts?

AGENDA

– Logos



AGENDA

- Thank are past due for:
 - Carolyn Hartline – Refreshments
 - And Christina Clarke for helping out!
 - Rose Baker – Secretary/Treasurer
 - Jeanette Navia - Website
- GRAPE outings –
 - Looking for destination ideas or people to lead a group

AGENDA

- Upcoming Events:
 - Wildlife Photography 101 By Ken Conger
–April 18th at Va Living Museum
 - Back Bay Winter Tram Tours
–March 8th and 22nd

AGENDA

- Photo Fix Submissions – Adjustments Only
- Tonight's Images – “Black and White”

PHOTO FIX

The Original





Barbara Houston

White Balance: Daylight

Temperature 5500

Tint +10

Auto Default

Exposure -0.50

Contrast 0

Highlights -67

Shadows +78

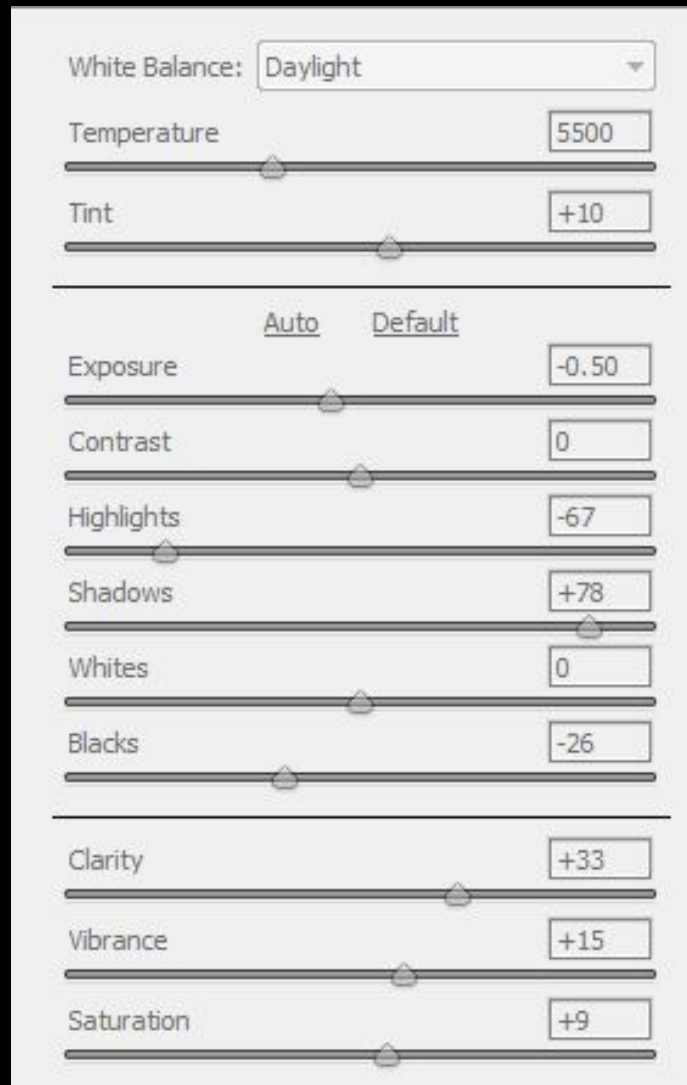
Whites 0

Blacks -26

Clarity +33

Vibrance +15

Saturation +9



Barbara Houston



Paul Baker



Rose Baker

AGENDA

- One last thing.....

WHAT COLOR IS THE DRESS?

Is this dress
black and blue or
white and gold?
Do you care?
You *must*.



So let's settle this: what colors are this dress?

69%



2.1M votes

White and Gold

31%



917.2K votes

Blue and Black

Light enters the eye through the lens—different wavelengths corresponding to different colors. The light hits the retina in the back of the eye where pigments fire up neural connections to the visual cortex, the part of the brain that processes those signals into an image. Critically, though, that first burst of light is made of whatever wavelengths are illuminating the world, reflecting off whatever you're looking at. Without you having to worry about it, your brain figures out what color light is bouncing off the thing your eyes are looking at, and essentially subtracts that color from the “real” color of the object.



R: 128
G: 110
B: 70

R: 135
G: 148
B: 190

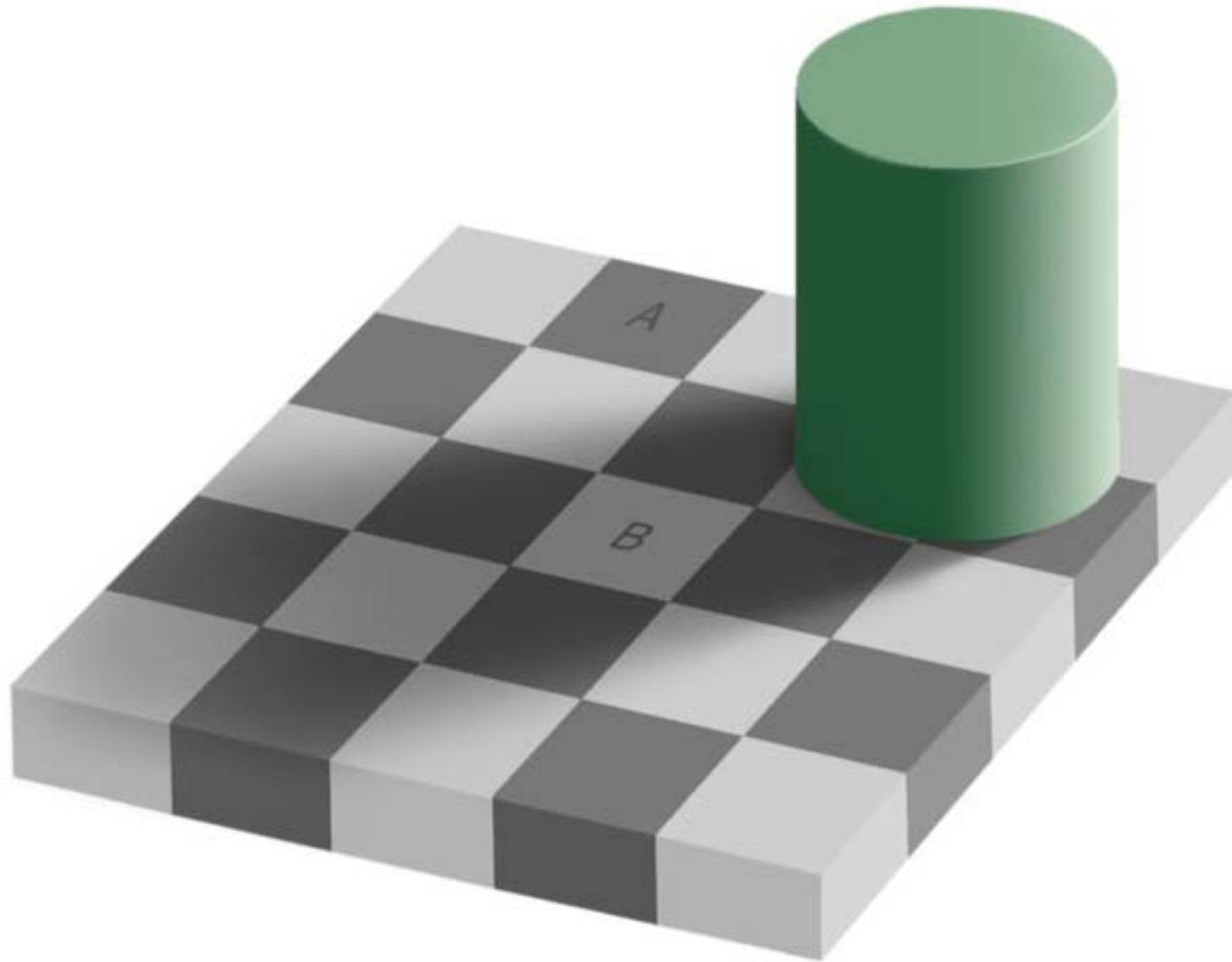
R: 101
G: 101
B: 129

R: 131
G: 140
B: 195

R: 93
G: 76
B: 50

R: 71
G: 53
B: 43

People are pointing [this this well-known optical illusion](#) to explain what's going on with our eyes when we look at the dress photo. In this image, the squares labeled A and B are exactly the same color:



So is it a poorly lit photo of a white and gold dress with a blue color cast, or is it a horribly over exposed photo of a black and blue dress with a yellow color cast?

This is what the dress really looks like:



Royal-Blue Lace Detail Bodycon Dress

£50.00



Choose your Size:



SIZE
GUIDE

ADD TO BAG >

This amazing lace dress will be your new favourite! Cut to flatter this dress is bang on trend with it's beautiful lace detail. Wear with your favourite heels and a clutch.

- Style: 70931
- Fabric: 68% Viscose 27% Polyamide 5% Elastane
- Care: Dry Clean Only
- Sleeve Length: Knee Length Dresses
- Length: N/A

VA DEPT GAME AND INLAND FISHERIES

Magazine Submissions

- Check submission guidelines online:
www.dgif.virginia.gov/virginia-wildlife
- Check with editor on story assignments:
Holes that need to be filled
- Pics From the Field: VW Magazine,
P.O. Box 11104, Richmond, VA 23230-1104

VA DEPT GAME AND INLAND FISHERIES

Points to Keep in Mind

- Magazine now at bi-monthly publication: 6 issues/year, including photo contest
- Plan/assign features one year in advance
- Small staff
- Other publications: Hunting & Fishing regs, VW calendar, brochures

VA DEPT GAME AND INLAND FISHERIES

Tips for Success

- Keep in touch!
- Read the magazine
- Tell us your area(s) of expertise:
game mammals, nongame/birds,
regional emphasis, etc.
- Consider/pitch photo-essays: 2 pages

VA DEPT GAME AND INLAND FISHERIES

CONTACT INFORMATION

Sally Mills, Editor

(804) 240.5943

Sally.mills@dgif.virginia.gov

Emily Pels, Art Director

(804) 432.4624

Emily.pels@dgif.virginia.gov

Magazine Content Online:

www.dgif.virginia.gov/va-wildlife

April Assignment:

“Spring”

Send your pictures to Craig by Sunday, April 5th

April Program – Ken Conger

See you on Monday, April 6th

6:30 PM